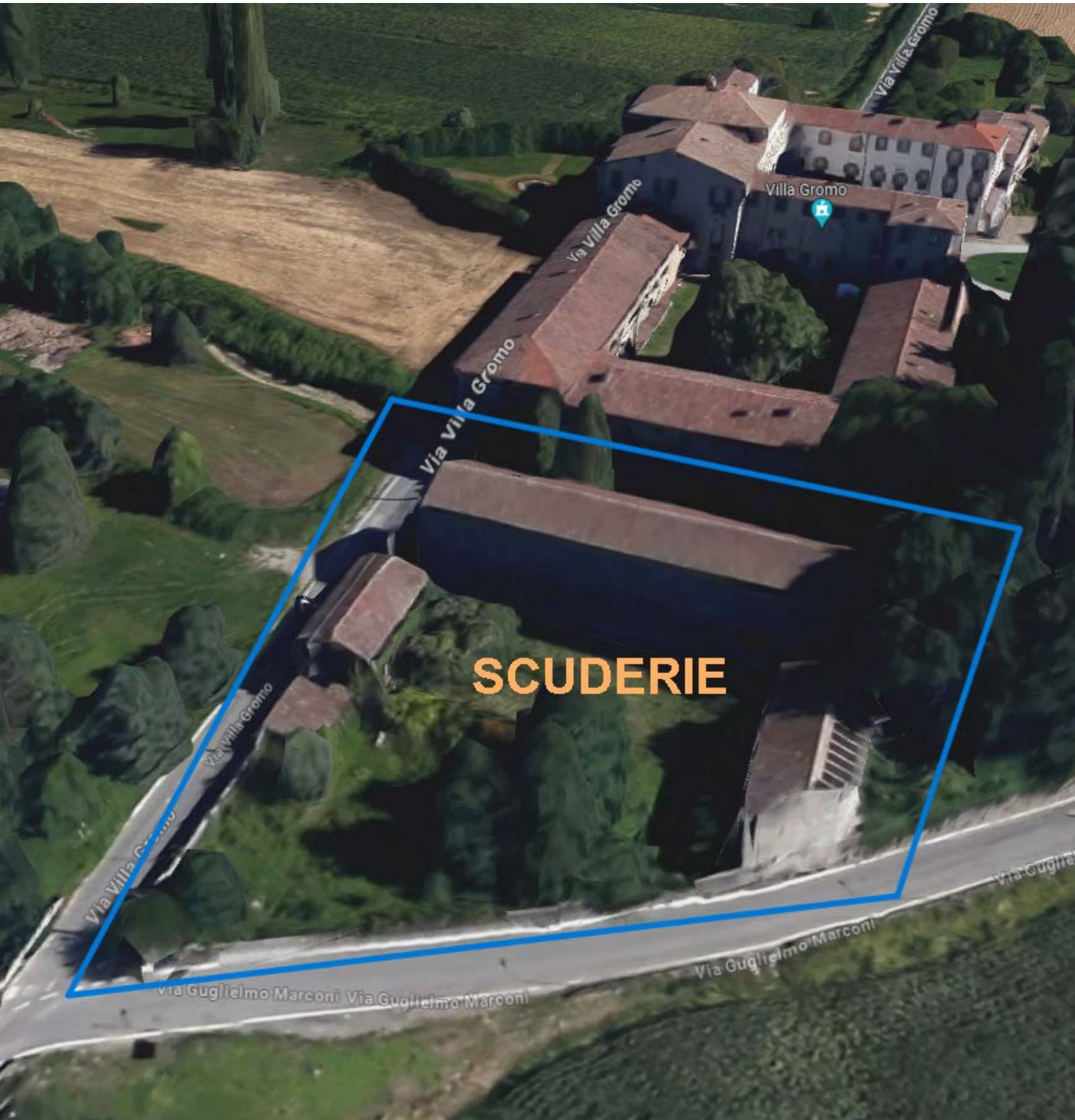
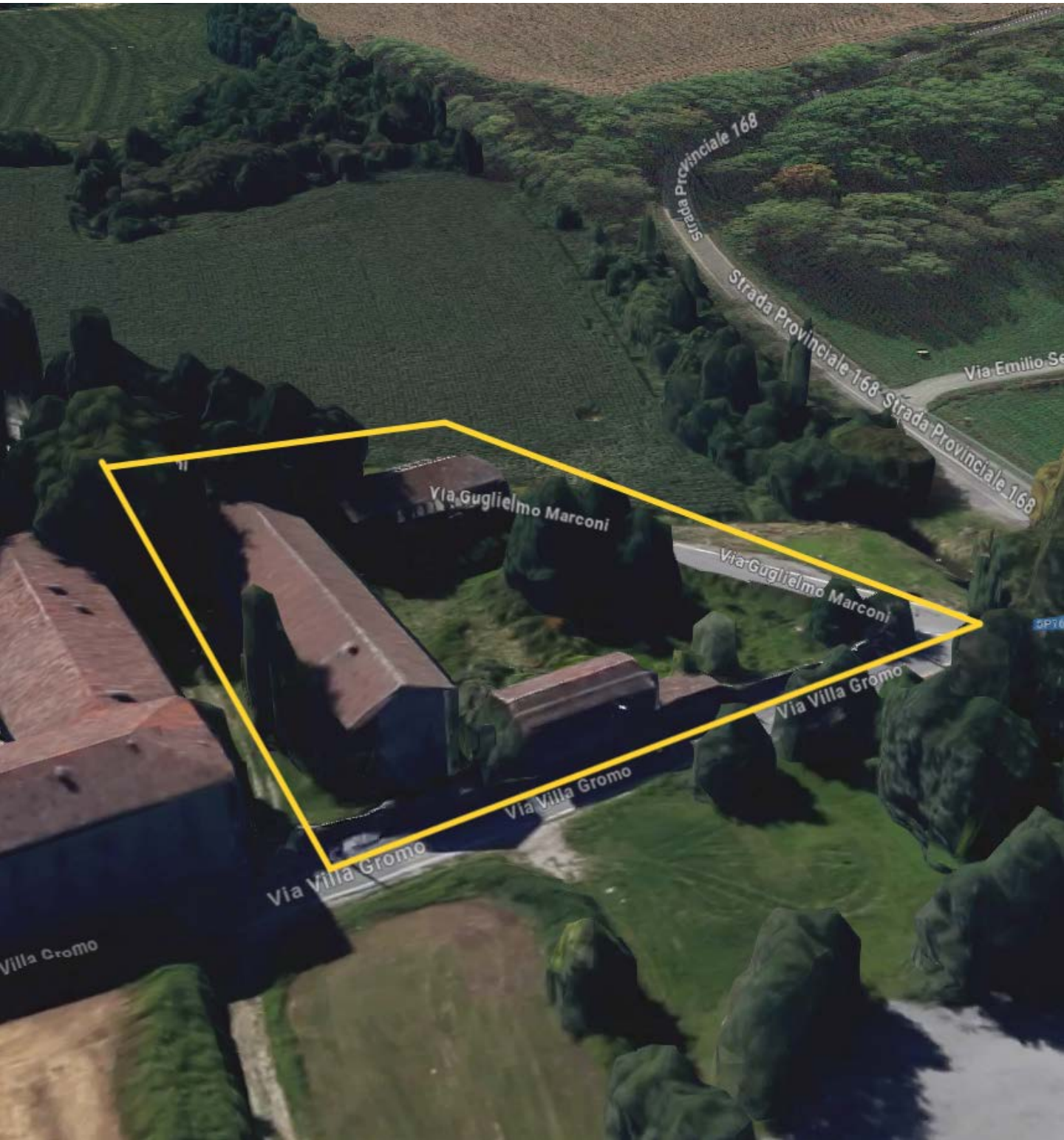


SUPERFICIE COMPLESSIVA CINTATA: **2.350 mq**
SUPERFICIE COPERTA EDIFICATA, DA RISTRUTTURARE, SU 3 E 2 PIANI, N°3 CORPI: **1.283,84 mq**
EDIFICIO A= **183,40 mq**
EDIFICIO B= **885,60 mq**
EDIFICIO C= **214,84 mq**





SCUDERIE





Via Guglielmo Marconi

Via Guglielmo Marconi

Via Guglielmo Marconi

Via Guglielmo Marconi

Via Villa Gromo

Via Villa Gromo



















