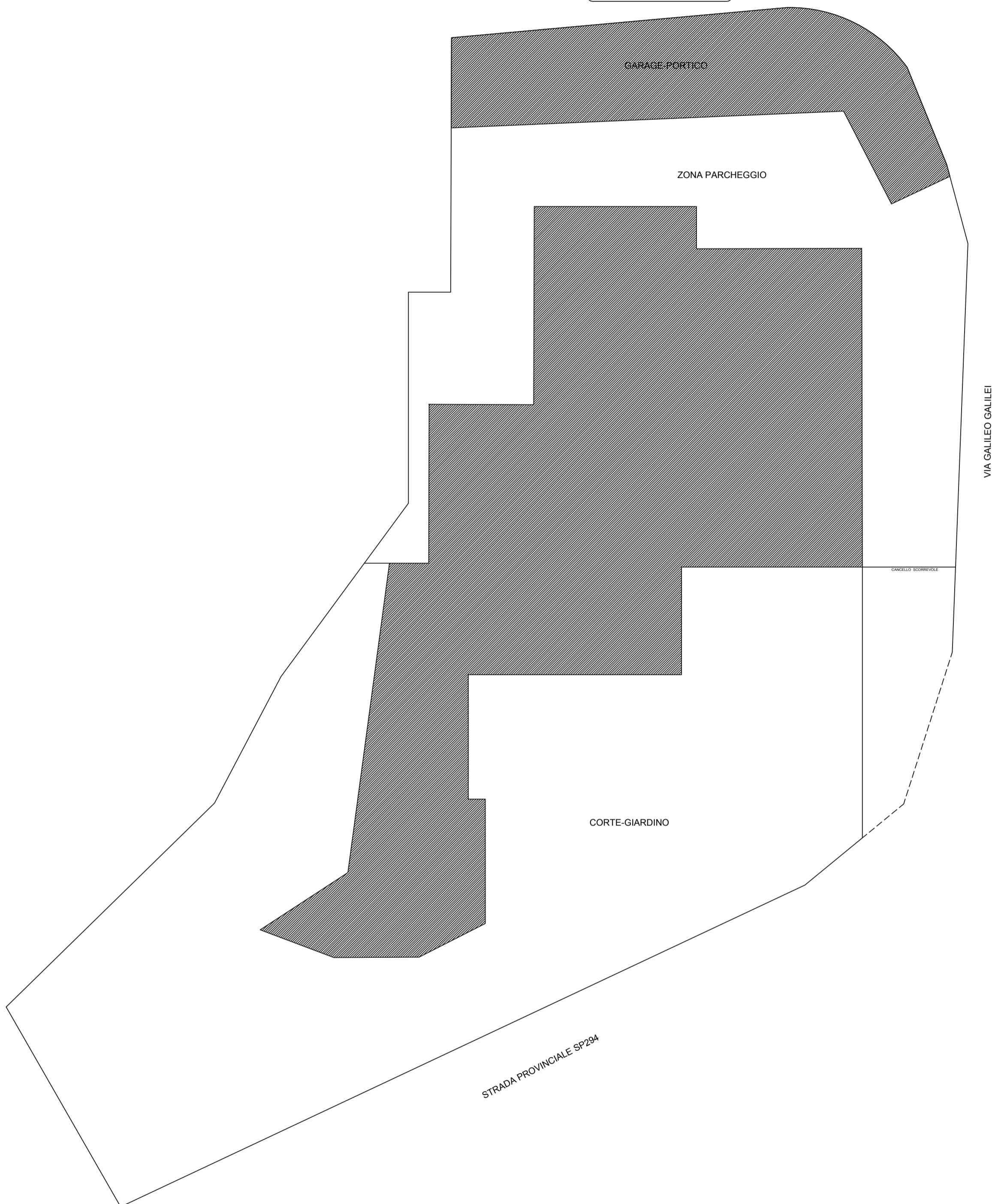
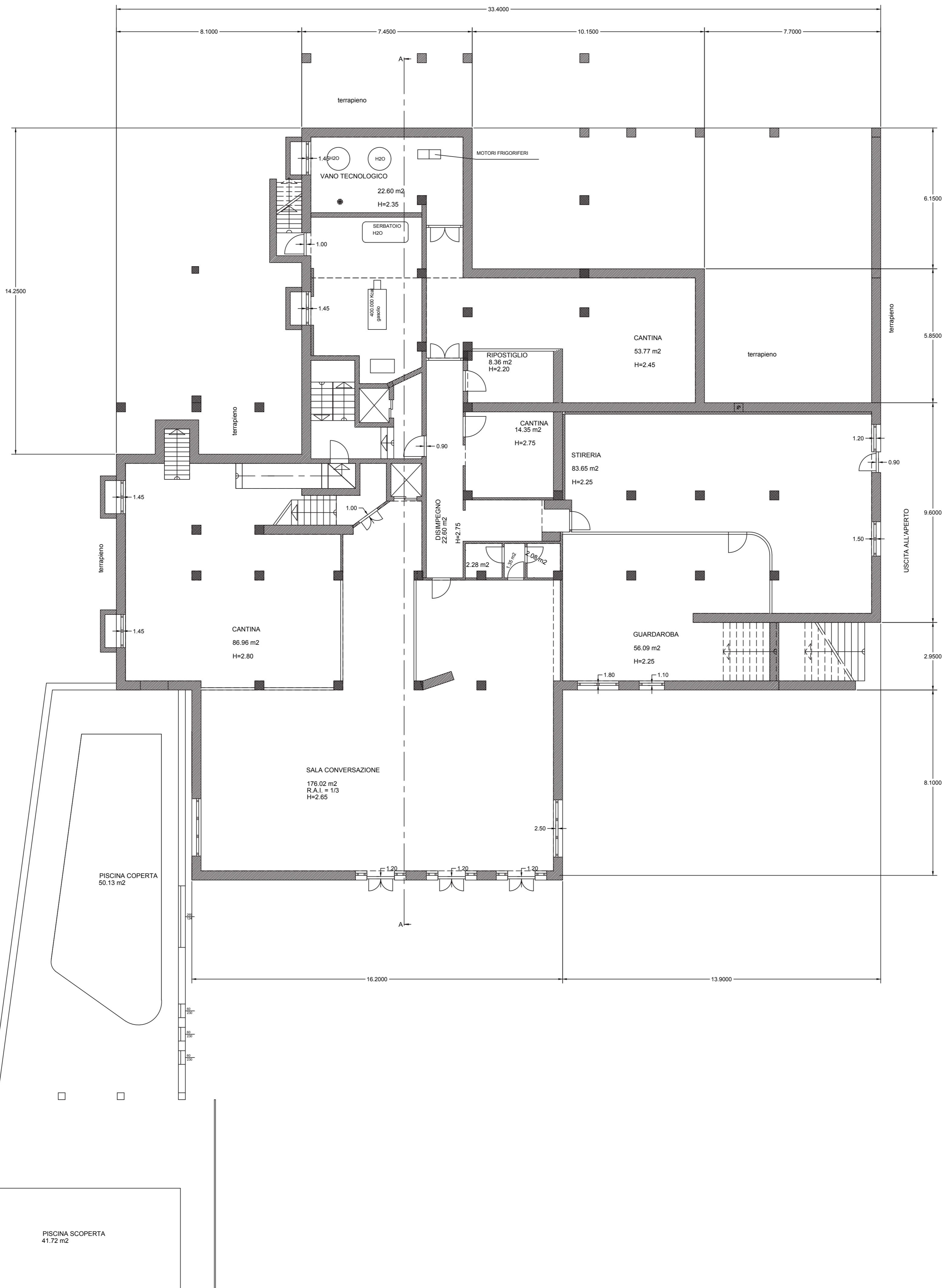


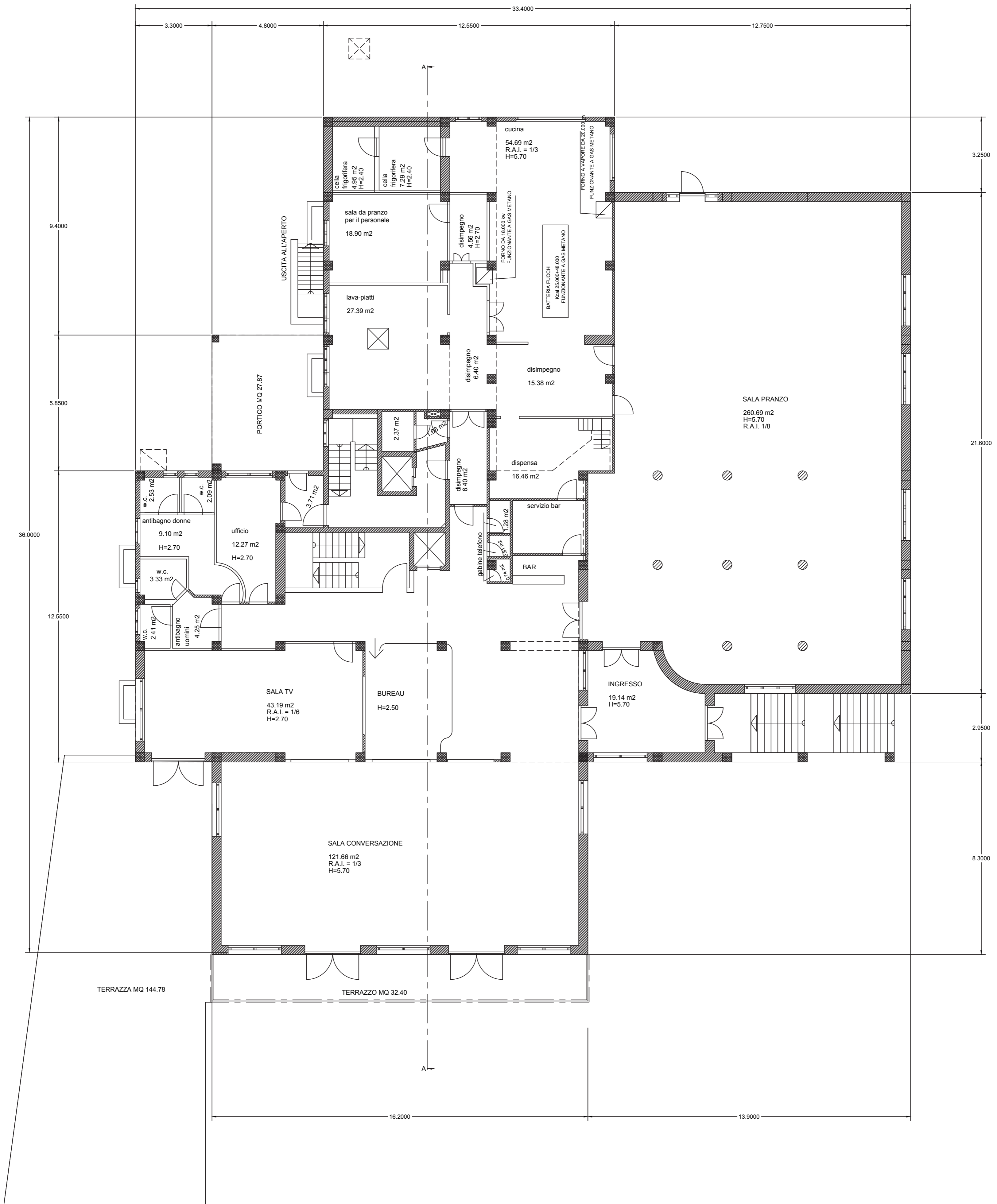
PLANIMETRIA GENERALE



PIANTA PIANO SEMINTERRATO

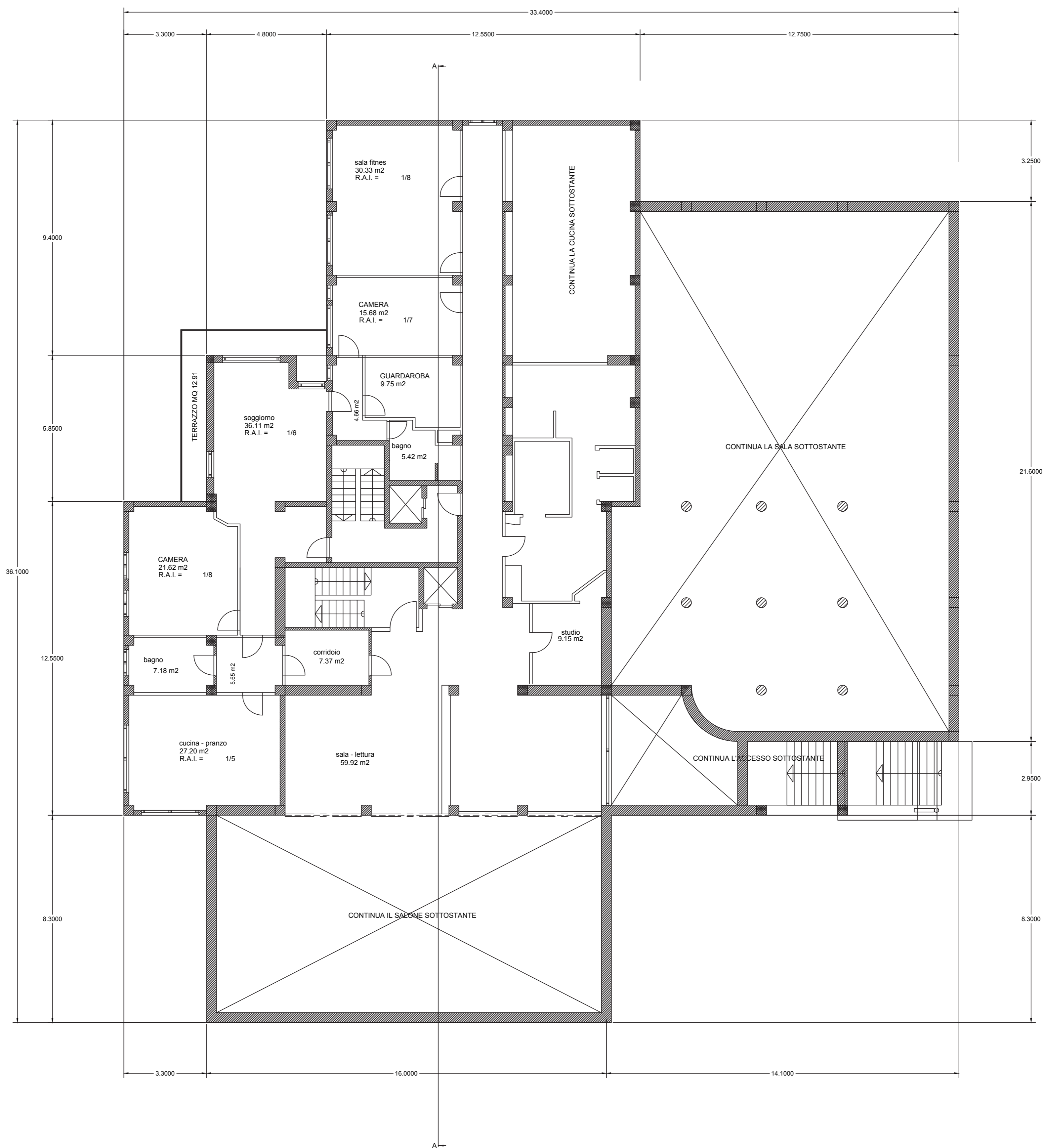


PIANTA PIANO TERRA

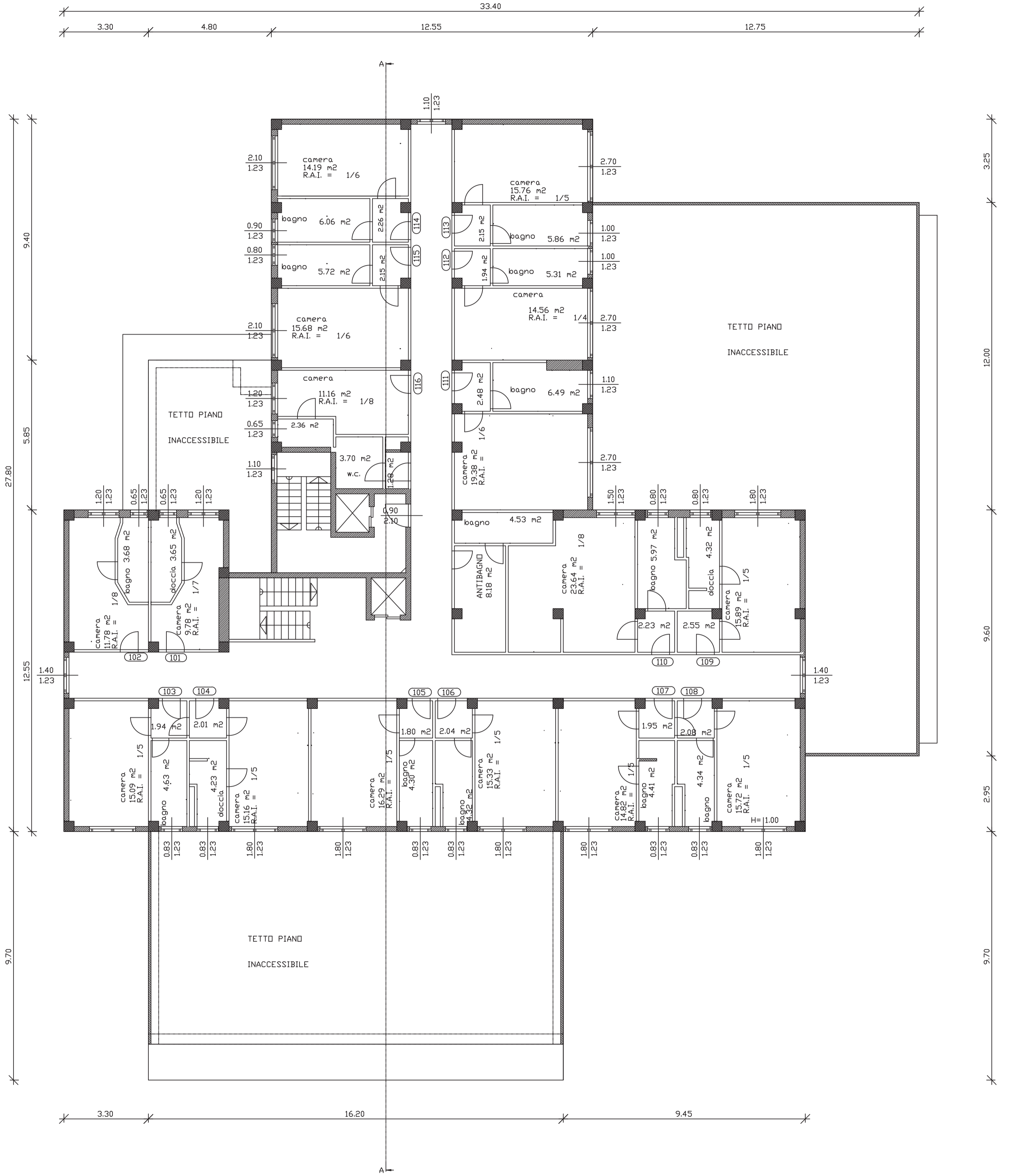




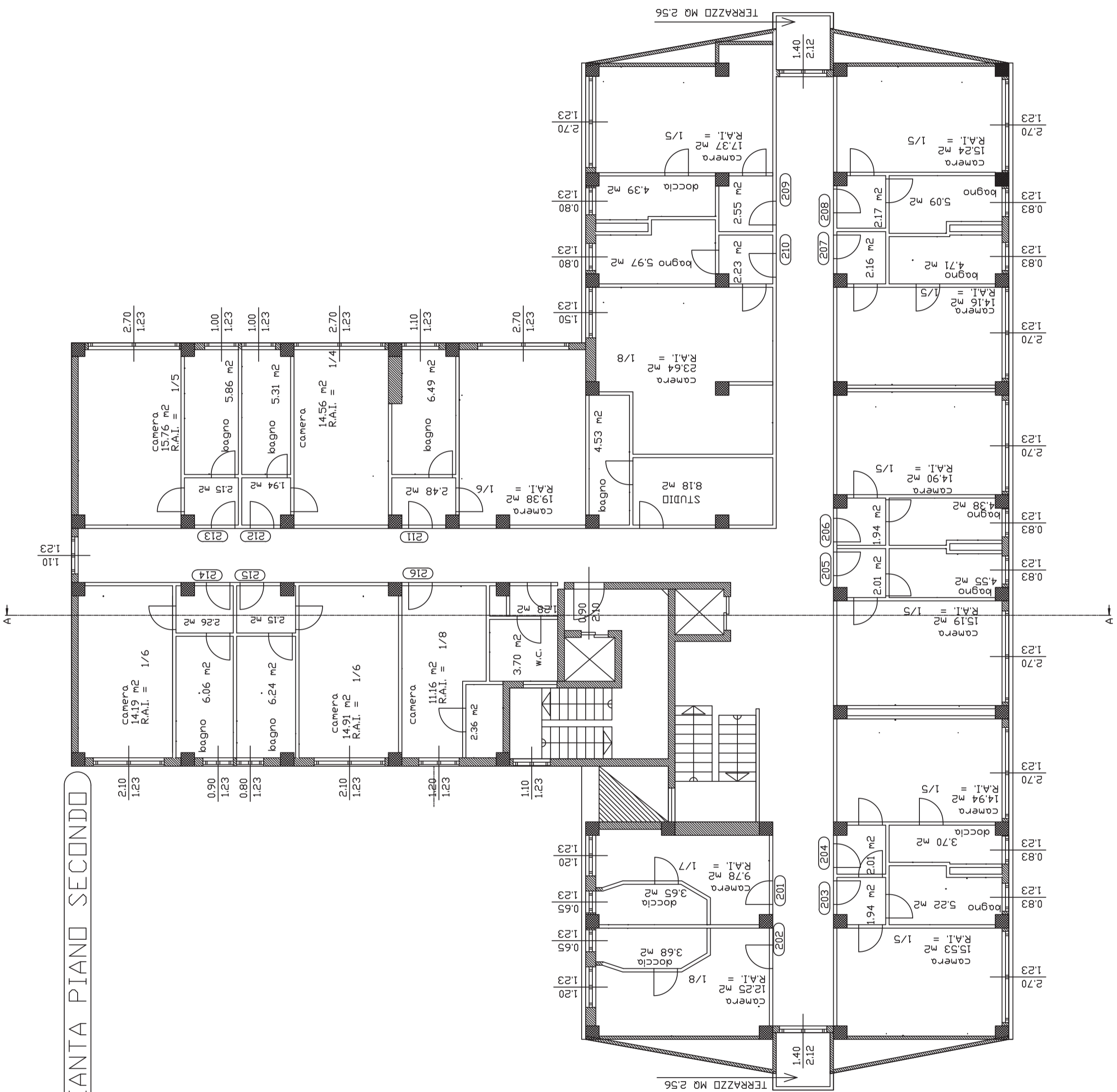
PIANTA PIANO SOPPALCO



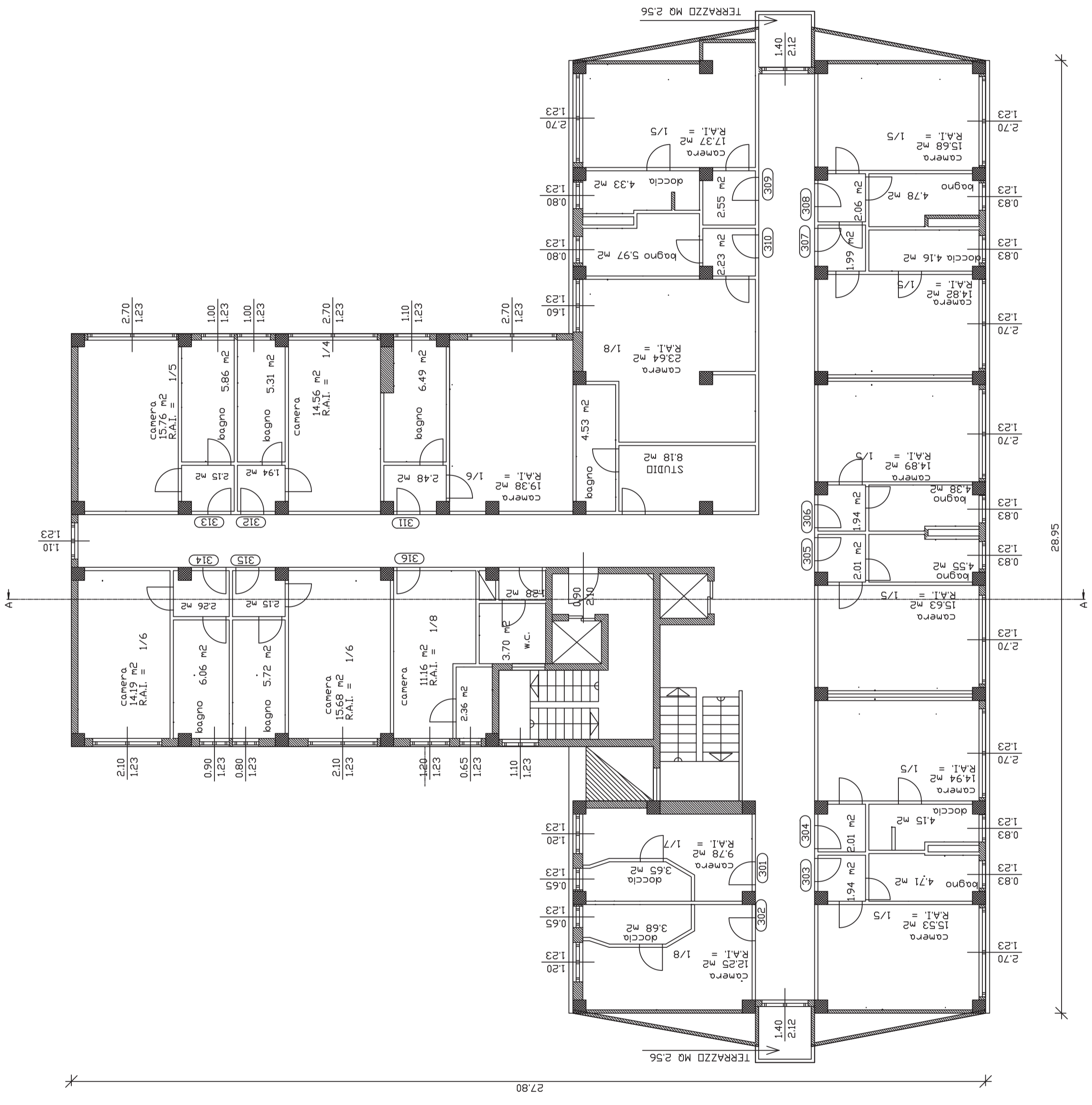
PIANTA PIANO PRIMO



PIANTA PIANO SECONDO



PIANTA PIANO TERZO



27.80

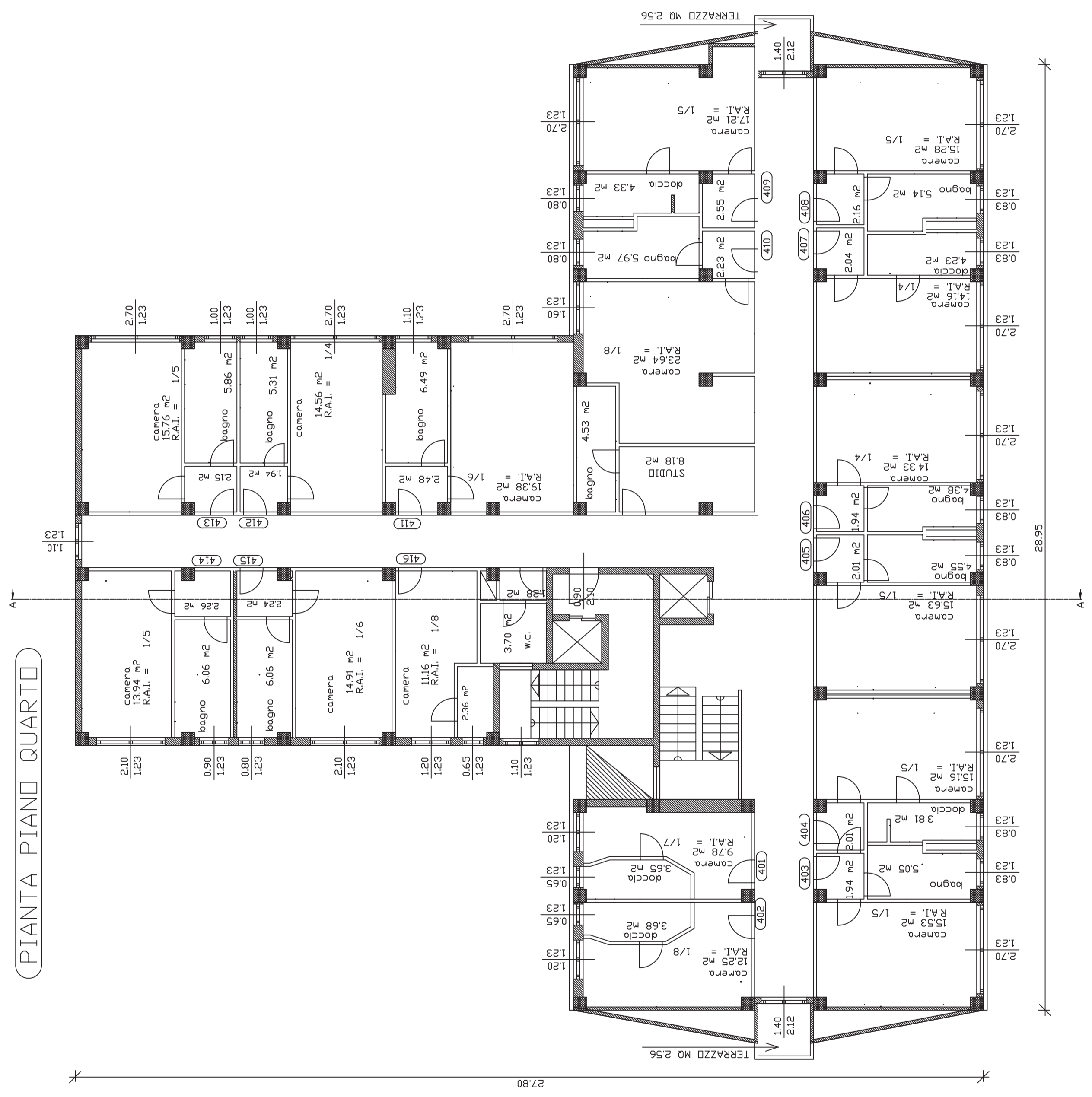
28.95

TERRAZZO MQ 2.56

TERRAZZO MQ 2.56

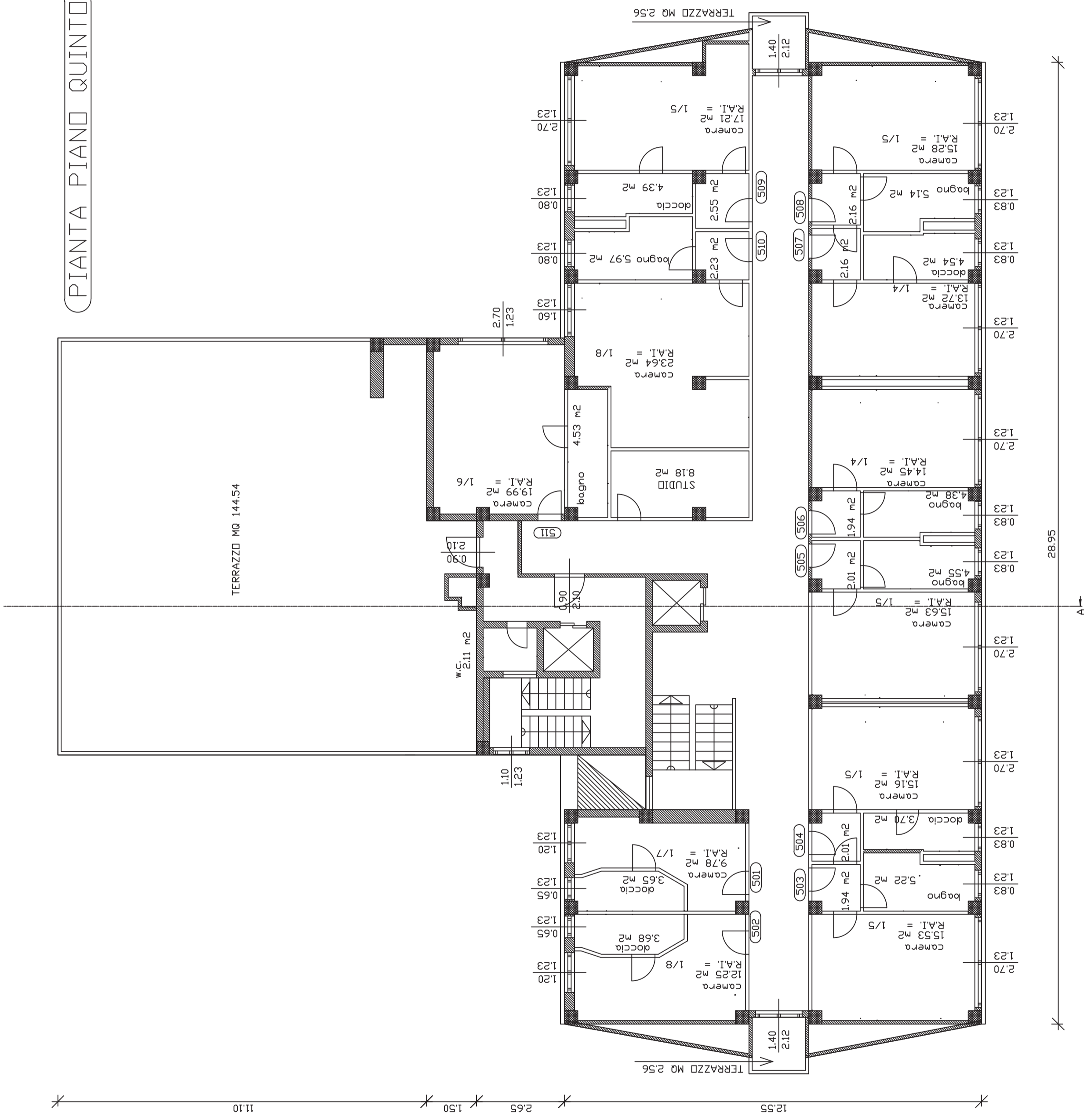


PIANTA PIANO QUARTO





PIANTA PIANO QUINTO







SEZIONE A-A

28.77

25.00

21.80

18.60

15.40

12.20

9.00

6.00

3.00

0.00

3.44 0.30 2.90 0.30 2.90 0.30 2.90 0.30 2.90 0.30 2.90 0.30 2.70 0.30 2.70 0.30 2.65 0.35

28.44

5.70

0.30

2.40 2.74