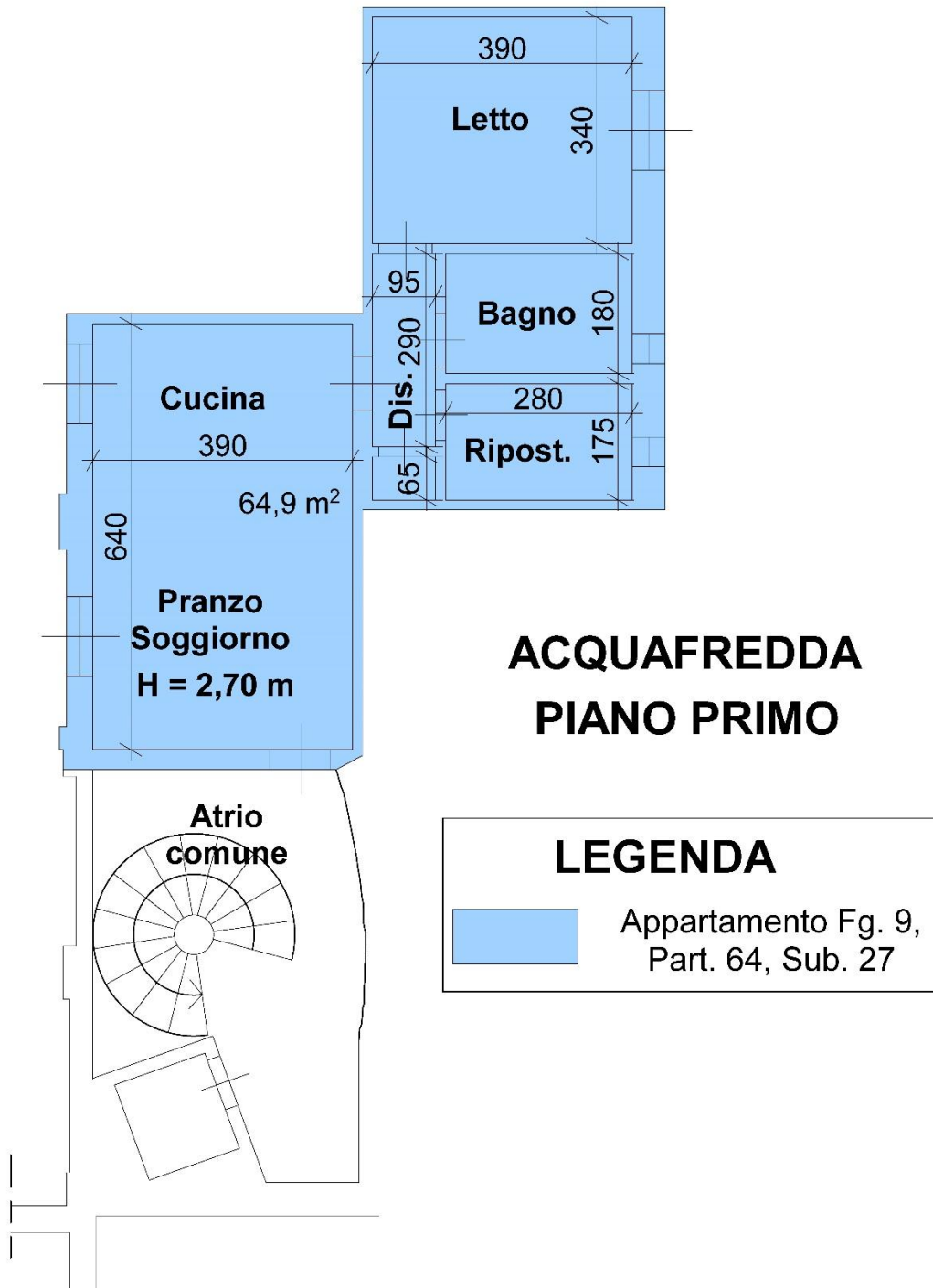
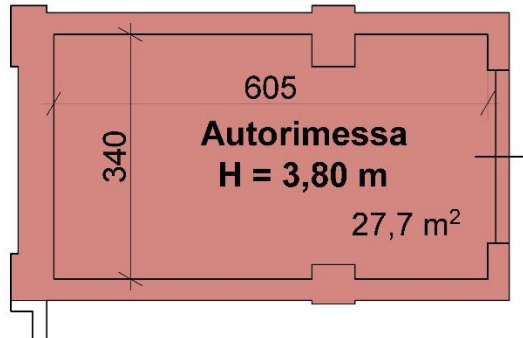


Planimetrie complessive del compendio immobiliare:

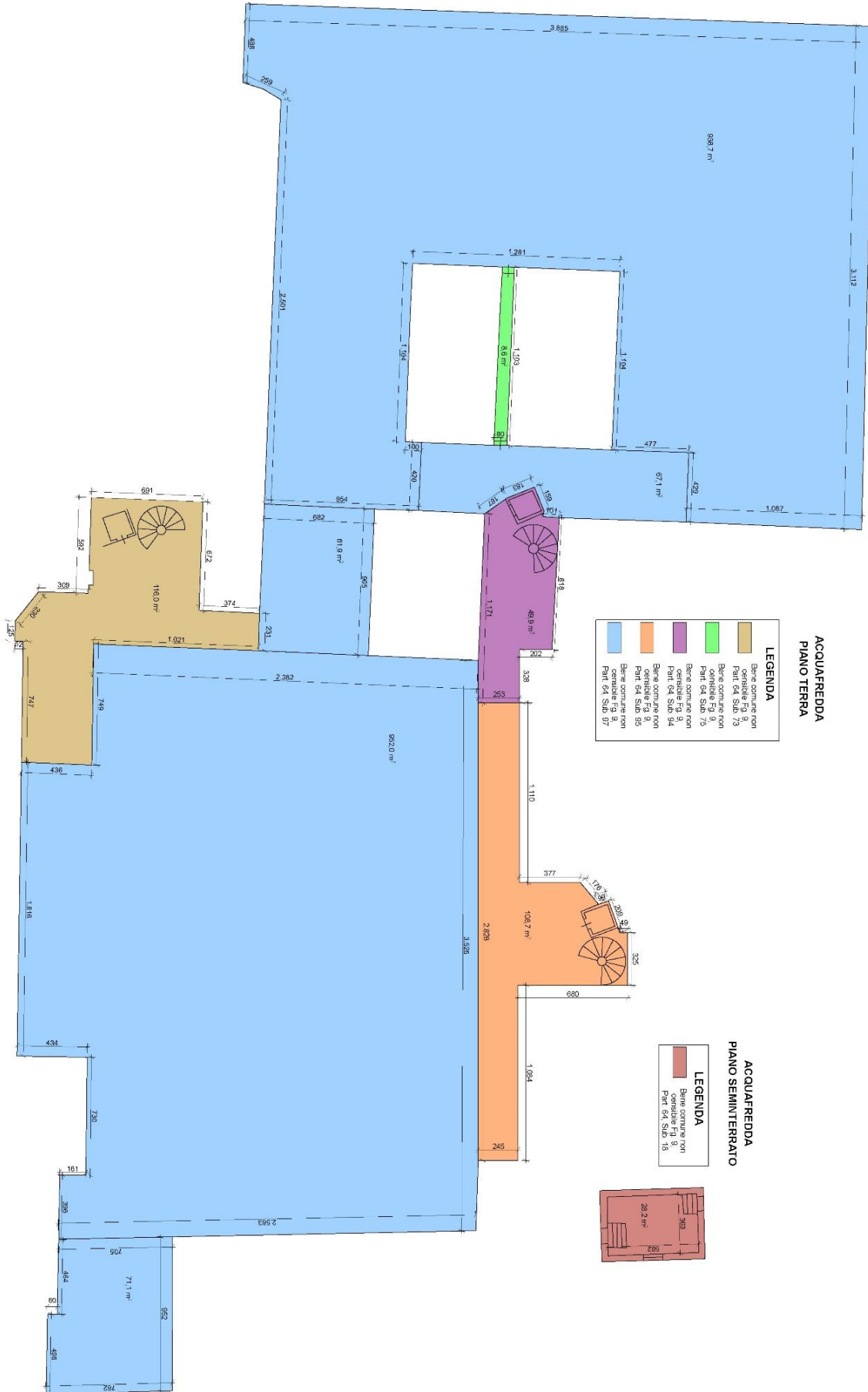


ACQUAFREDDA PIANO TERRA

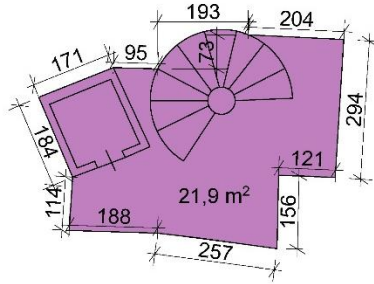
LEGENDA	
	Autorimessa Fg. 9, Part. 64, Sub. 36






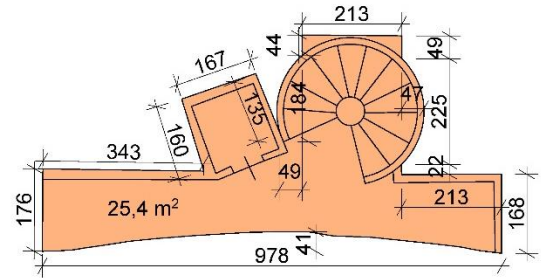
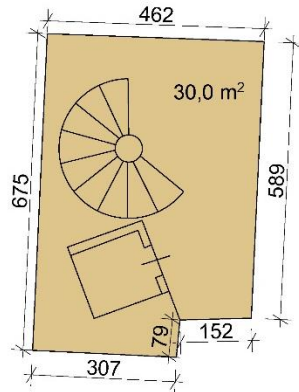
Es. imm. n. 741/2018 – Tribunale di Brescia
 CTU Ing. Andrea Giuzzi






**ACQUAFREDDA
 PIANO PRIMO**



LEGENDA	
	Bene comune non censibile Fg. 9, Part. 64, Sub. 73
	Bene comune non censibile Fg. 9, Part. 64, Sub. 94
	Bene comune non censibile Fg. 9, Part. 64, Sub. 95



**ACQUAFREDDA
 PIANO SECONDO**

LEGENDA	
	Bene comune non censibile Fg. 9, Part. 64, Sub. 73
	Bene comune non censibile Fg. 9, Part. 64, Sub. 94
	Bene comune non censibile Fg. 9, Part. 64, Sub. 95

